



LTH™ Drawer-In-Housing

Optimum Separation for Difficult Flowing Products

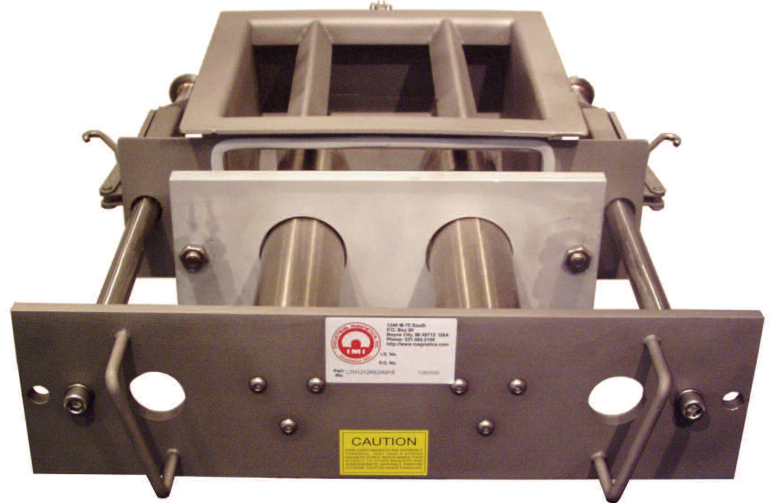
TRAMP METAL

TG-03D

Industrial Magnetics, Inc. • PO Box 80 • Boyne City, MI 49712 • p: 888.582.0821 • f: 231.582.2704 • w: www.magnetics.com • e: imi@magnetics.com

APPLICATION:

- Capture and remove ferrous tramp metal particles from vertical product flows
- Ideal for flour, powdered sugar and products with a tendency to bridge
- Large 3" tubes with steep inline diverters prevent bridging and clogging of fine or moist products



INTRODUCTION:

IMI's new LTH™ (Large Tube Housing) incorporates 3 inch diameter rare earth tubes into our proven Drawer-In-Housing configuration for optimum ferrous metal separation for difficult flowing products. These larger tubes are placed in the housing directly below steep angled diverters that prevent product from bridging or building up on the tubes. The spacing between the tubes is much larger than in a traditional housing with 1 inch diameter tubes, allowing for product to flow freely through the housing.

As product flows into the top of the housing, it's forced past the tubes by the diverters. This ensures that the product comes in direct contact with a magnet as it travels through the housing.

As ferrous metal passes through the magnetic field, it is held to the tubes and separated from the product. The metal must be cleaned from the tubes on a regular basis to prevent buildup and subsequent wash-off into the product flow.

OPTIONS:

- Custom sizes and transitions available
- Housing finish and welding surface treatments
- Two drawer design with 3 or 5 vertically offset tubes
- Nema #9 solenoids (self-cleaning only)
- 316 L Stainless steel housing
- Nedox Coated Tubes - Provides protection from abrasive materials and is self-lubricating to help prevent build-up and galling

FEATURES:

- Powerful 45 MgOe Rare Earth Circuit - Designed for optimum reachout and surface holding strength
- BUNA Wiper Seals - for removing collected metal
- Compression Spring Assisted Seal Plate
- 304 Stainless Steel Construction
- Food Grade EPDM Gasket Material - for leak resistant operation
- Hinged Rear Access Door
- Collection Pan for Captured Metal

Key Markets

Food & Grain, Bulk Powder

Related Products

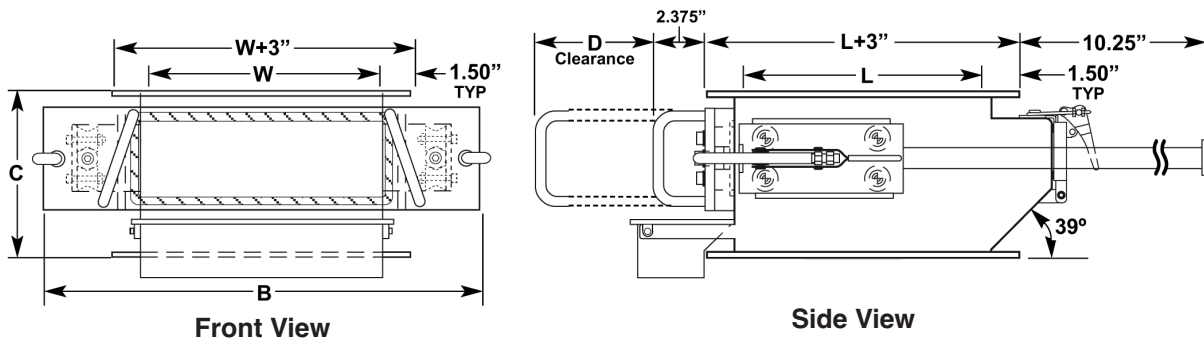
Magnetic Drawer-In-Housings, Extractor/Split-Flow Magnets, Magnetic Tubes & Grates, The Ox, Pipe Magnets

All Photos And Drawings Represent The Products At The Time Of Publication (10/06)

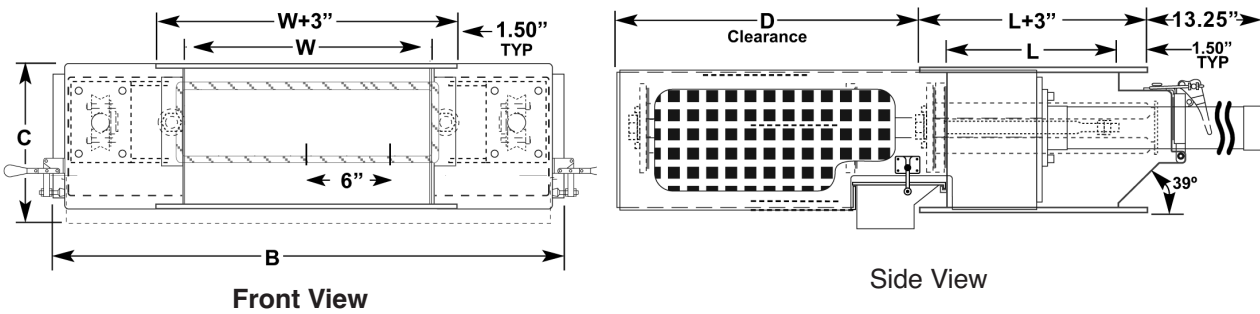
LTH™ Specifications

Drawings and Standard Model Information for Large Tube Housing™

EZ-CLEAN (EZ) DRAWER-IN-HOUSING DIMENSIONS:



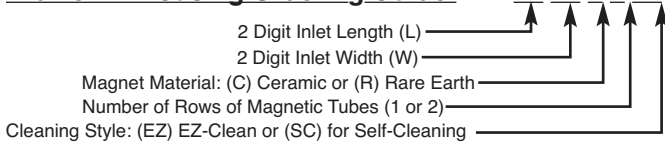
SELF-CLEANING (SC) DRAWER-IN-HOUSING DIMENSIONS:



Standard Part No.	Inlet I.D. (L x W)	Width(EZ) B	Width(SC) B	Height(EZ/SC) C	Clearance (EZ) D	Clearance (SC) D	# Of Tubes	Weight(EZ) Lbs.	Weight(SC) Lbs.
LTH1212R1(EZ/SC)	12 x 12	22	24	9	17	18	2	140	285
LTH1414R1(EZ/SC)	14 x 14	24	26	9	19	20	2	160	210
LTH1616R1(EZ/SC)	16 x 16	26	28	9	21	22	3	200	255
LTH1818R1(EZ/SC)	18 x 18	28	30	9	23	24	3	220	280

All Dimensions Are Stated In Inches

Drawer-In-Housing Ordering Guide: LTH



Example: LTH1812R1EZ = 18"x 12" Inlet, Rare Earth, 1 Row, EZ-Clean